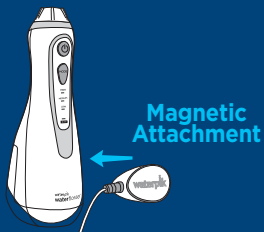


waterpik® waterflosser®

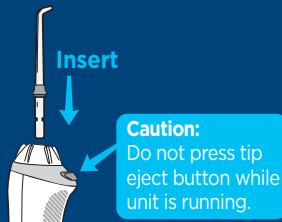
QUICK START GUIDE

Cordless Advanced 500 Series

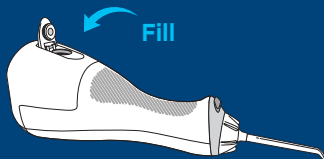
1 Unit Prep



A. Charge unit for 4 hours by placing the magnetic charger on the front of the unit.



B. Insert tip until it clicks into place. To remove tip, push the tip eject button.



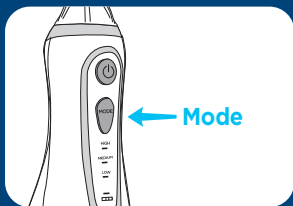
C. Lift the flip top on reservoir and fill with warm water. Refill as needed.

waterpik® waterflosser®

QUICK START GUIDE

Cordless Advanced 500 Series

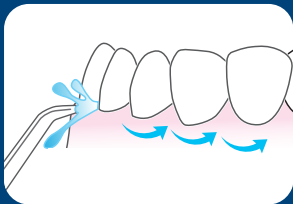
2 Water Floss



A. Press mode button to adjust pressure. Start on low pressure and increase to your liking.



B. Turn power ON. Close lips enough to prevent splashing. Keep unit upright during use to ensure continuous water flow.



C. Aim water at the gumline at a 90 degree angle. Follow the gumline and pause briefly between teeth.

TO AVOID MESS: KEEP TIP IN MOUTH WHILE UNIT IS ON.